

This is the operation manual for Curemo version 1.1. Curemo is try-before-you-buy-ware. You may try the fully functional unregistered version for a maximum of 30 days. Within this time you must either purchase a license or remove it from your system. See chapter 9 for more information.

1 - Introduction

Curemo is all about offering you more flexibility in operating Cubase¹. With Curemo you can control Cubase from other PC's & Pocket PC's and assign many more keyboard shortcuts to Cubase commands.

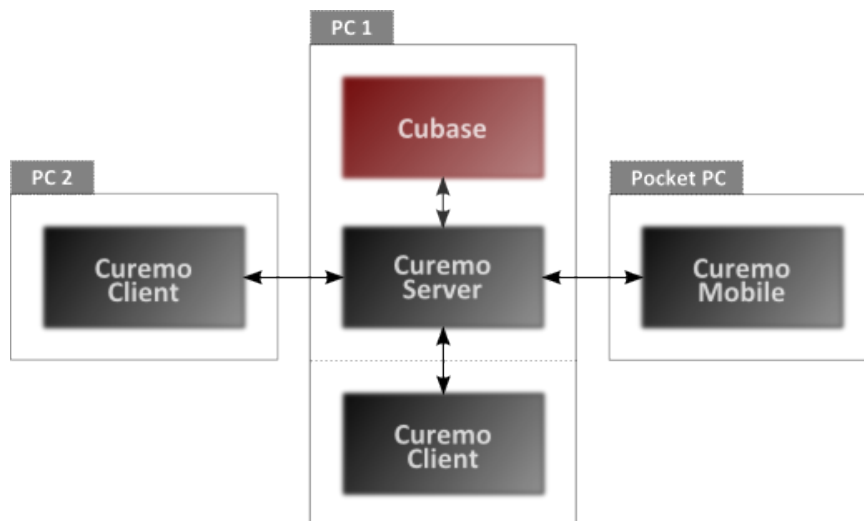
So what does it offer?

- ◆ A (completely) configurable panel with buttons to execute Cubase commands and state feedback about command states, current track number & name and song position. Buttons may be pressed using the mouse, stylus or your fingers.
- ◆ Functionality for flexibly assigning keyboard shortcuts to Cubase commands – globally (always active, regardless of the current foreground application) or locally (only active when Curemo is the active application).
- ◆ Remote control from any number of networked PC's and pocket PC's of Cubase with the aforementioned panel and keyboard shortcuts through the TCP/IP protocol.

Curemo is built around a client-server architecture, allowing many Curemo Clients to control a single instance of Cubase through Curemo Server over a standard TCP/IP network connection from any distance; This gives you ultimate flexibility in control.

It is small, lightweight, unobtrusive and will run on any edition of Windows XP or Windows Vista. You can easily turn an older computer, or a computer which is normally used for other purposes into an additional controller for Cubase. It comes in a native 32-bit and 64-bit version and does not depend on any external software or libraries except for Cubase of course.

2 - Curemo Architecture



In the diagram 2 PC's and a Pocket PC mobile device are used. PC 1 is the main host that runs Cubase. This PC has **Curemo Server** installed, which enables external control of Cubase. Curemo Server always needs to be on the same system as Cubase. See chapter 5 for details on Curemo Server.

Additionally PC 1 also has an instance of **Curemo Client** installed. This is not required, but it is useful if you want to use Curemo to assign more keyboard shortcuts to Cubase commands and also if you want to design custom panels for

¹ "Cubase" is a registered trademark of Steinberg Media Technologies GmbH.

(other) Curemo Client and Curemo Mobile instances. If you run Curemo Client on the same machine it is said to be “local”. See chapter 6 for details on Curemo Client.

PC 2 has a “remote” instance of Curemo Client installed. Remote instances connect to Curemo Server via TCP/IP by configuring the server name or address and a port number. This PC can be right next to PC 1 (allowing you to map many more keyboard shortcuts to a secondary keyboard), or anywhere from a few feet to miles away (useful for transport control from other parts of the room or other rooms altogether).

The Pocket PC is a mobile device running Windows Mobile has an instance of **Curemo Mobile** installed. Curemo Mobile is a slightly simplified version of Curemo Client which allows control of Cubase through tapping on the touch-sensitive display using your fingers or a stylus. See chapter 8 for details on Curemo Mobile.

3 - System requirements

Curemo comes in both a 32-bit and native 64-bits version and officially supports the PC version of Cubase SX/SE 3, Cubase (Studio) 4 and Cubase (Studio) 5 on Windows XP (32-bit, Home and Professional) and Windows Vista (32/64-bit, all editions). Installation may need administrative rights.

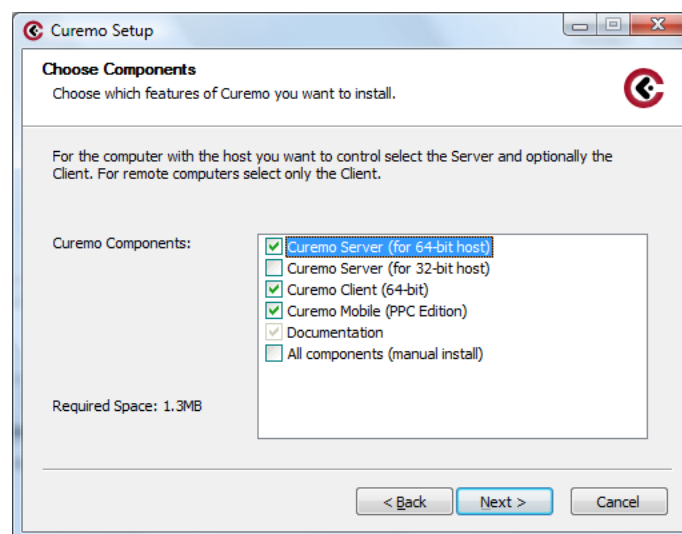
Note: Although currently not officially supported Curemo might also work correctly on Cubase LE. Cubase Essential 4 & 5 and Steinberg Nuendo due to the technical architectural compatibilities of these products.

A full installation of Curemo (Client, Server and documentation) on a PC will require about 3 MB of disk space. Memory requirements for the PC version are very low, but at least 128MB of RAM is recommended.

Curemo Mobile requires about 150 kB of disk space and Windows Mobile 5 or newer with a touch-display that has a resolution of at least 320x200 pixels.

4 - Installation

Curemo is installed using a single setup program that contains Curemo Server, Curemo Client, Curemo Mobile and the documentation. After the setup application is started a screen is presented which allows components to be selected. Unavailable components (for instance 64-bit components on a 32-bit system) will not be shown in the list.



The main choice that you have to make in this screen is whether you want to install the server or/and the client portion of Curemo. The server is typically only installed once – on the system that contains the Cubase you want to control using Curemo. The client is typically installed on separate systems, but may also be installed on the same system as the server (e.g. for additional shortcut mappings, editing panels or for quickly trying out Curemo).

You may also decide to do a manual install by selecting **All components (manual install)**. This will simply extract all separate Curemo components into the installation folder, allowing you to manually copy the application files and create your own shortcuts etc. This is only recommended for advanced users.


- ◆ If you've selected to install **Curemo Server** then the installer will prompt for the host application's “Components” folder. For Cubase this is typically **C:\Program Files\Steinberg\Cubase 4\Components**. Two library files will be installed to that folder **Curemo###.dll** and **CuremoSrv###.dll** (where ## is 32 or 64, depending

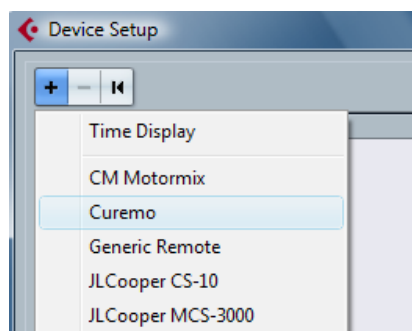
on the edition). It is important that you select the right edition of Curemo Server for your edition of Cubase. The 32-bit edition of Curemo will not work with the 64-bit edition of Cubase and vice-versa.

- ◆ **Curemo Client** (if selected) will be copied to the main installation folder, which also contains documentation and other Curemo program files. The location for this is also asked by the installer. It is recommended to accept the default (typically C:\Program Files\Protonfx\Curemo). The actual client consists only of the file **CuremoClnt##.exe** (where ## is either 32 or 64 depending on the selected edition). The edition of Curemo Client does not have to match that of Curemo Server. The 32-bit version of Curemo Client will work fine with the 64-bits version of Curemo Server and vice-versa.
- ◆ **Curemo Mobile** (if selected) will not be deployed automatically to your mobile device. Instead its setup CAB file **CuremoMobile.cab** and installation instructions are copied to the **Mobile** sub folder of the main Curemo installation folder. You need to copy this file to your mobile device manually and run it from there.

5 - Curemo Server

Curemo Server enables remote or local software control of Cubase from instances of Curemo Client and Curemo Mobile.

After installation Curemo Server needs to be activated. This is done in Cubase's **Device Setup** dialog (you can find this dialog the **Devices** main menu). To activate Curemo you need to press the  button on the toolbar and select **Curemo** in the menu.



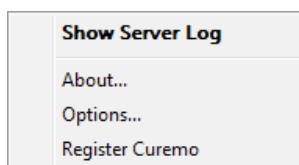
If Curemo does not show up in this menu then the two library files mentioned in chapter 4 are most likely not in the correct folder or the wrong edition (32/64-bit) is used. It may also be that your Cubase version is not supported. *See chapter 3 for the system requirements.*

After Curemo is activated, the server should automatically start and an icon is shown in the system notification area of the Windows Taskbar. The Device Setup dialog can now be closed. Note that you do not need to set any of the standard parameters in the Device Setup dialog for the Curemo device. Settings for MIDI input/output etc are ignored.

If Curemo is configured to automatically start Curemo Client along with Curemo Server and if Curemo Client is installed on the same system then Curemo Client is started as well. Additionally Curemo can be configured to merge the Server and Client notification icon. Depending on the configuration one or both of the following icons will show up in the system notification area:



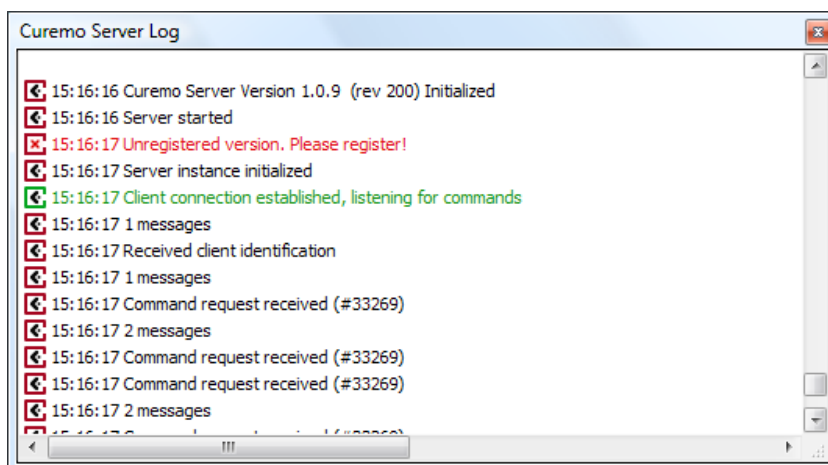
Curemo Server only has a few bits of user interface for configuration and informative purposes, for the rest it simply runs in the background and once set-up correctly you will hardly ever need to touch it. If the first icon (the Curemo Server icon) is shown then you can right-click it to show a menu. If only the second icon is shown (due to Client-Server icon merging) then the same menu can be found by right-clicking that icon and selecting **Server**.



You will notice that Curemo Server has no "Exit" command. To stop Curemo Server simply exit Cubase or unregister it from Cubase.

Show Server Log

Toggles the Curemo Server Log window, which can be useful for tracing client-server connection problems or other issues. This is also the default item, which means that you can also simply double click on the Curemo Server icon to show the log.



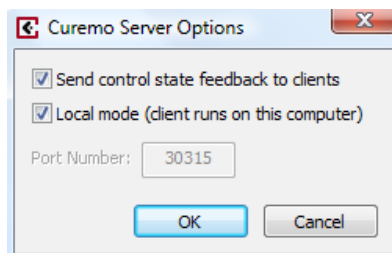
Right-click on the log to show a menu with options to clear the log and to save the log to file.

About...

Shows a dialog with version information.

Options...

Shows the Curemo Server Options dialog



Send control state feedback to clients

This option controls whether the current state of controls in Cubase is sent to connected Curemo clients. This allows clients to display the current state in their user interface. This option is enabled by default but you may decide to disable it if you do not care for or use this feedback information in the client. You may also want to disable it if you notice long delays between executing an action in a client and the visual feedback.

Local mode (client runs on this computer)

This option runs the client only in "local mode" which means that only clients running on the same computer can control Cubase. Enabling this option, disables the "Port Number" setting, because for pure local mode no TCP/IP connection is used. If you only use local client applications that communicate with Curemo Server then it is recommended to enable this option because pure local mode is faster and uses less system resources than "remote mode". Because Curemo Mobile is by definition a remote client, it cannot be used with a server that runs in Local mode.

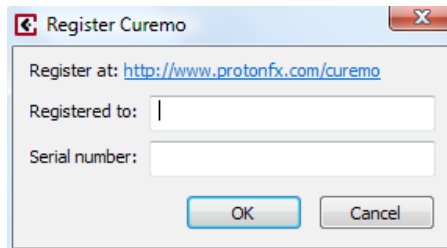
Port Number

Specifies the TCP/IP port on which Curemo Server communicates with client applications. The default is 30315 but you may choose any available other port. Just make sure that all clients also

use the same port number. Additionally you must make sure that the specified port is not blocked by your Firewall software.

Register...

Shows the Curemo Registration dialog. Here you can enter your registered name and serial number to unlock the full version of Curemo after purchasing it. This option will disappear after registration was successful.







6 - Curemo Client

Curemo Client is the application that handles keyboards shortcuts and transport commands from local or remote machines. It communicates with a Curemo Server for the actual processing of the commands in Cubase.

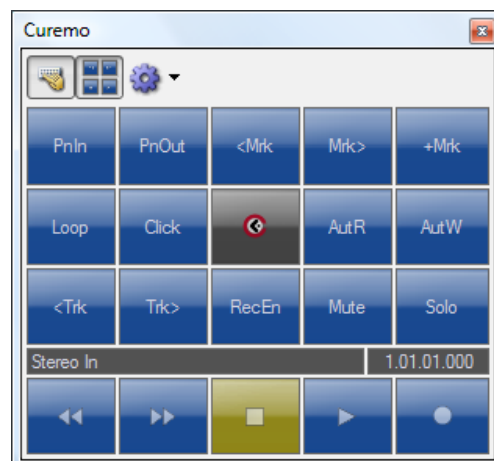
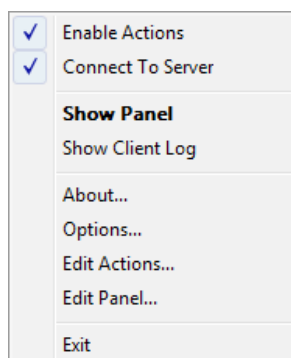
Curemo can start automatically with Windows or with Curemo Server. On startup the Curemo Client icon will be shown in the notification area and a floating window called the **Curemo Panel** will be shown. If Curemo Client and Server icon merging is enabled then the Curemo Client icon will replace the Curemo Server icon.




The Curemo Client notification icon can appear in the following four states:

-  Curemo Client is connected to the server and ready to process commands.
-  A command is processed by the server.
-  An error has occurred (usually the means that the client cannot connect to the server).
-  Curemo Client is disconnected from the server.

Right-click the Curemo Client icon to show the Client menu. Left click it to toggle the Curemo Panel.



All commands in the Curemo Client menu can also be accessed from the Curemo Panel using the  button on the toolbar. The rest of this chapter will explain all Curemo Client menu and toolbar commands. See chapter 7 for an explanation of the Curemo Panel a.k.a. The “blue buttons”.

Enable Actions (also: first button in Curemo Panel)

This toggles whether or not keyboard shortcuts are enabled. This toggle is useful because global keyboard shortcuts can be defined, which means they are enabled regardless of the active foreground application. By using this toggle you can quickly disable the shortcuts so you can use these shortcuts in other applications.

Connect To Server

Connect/reconnect to Curemo Server. If Curemo Client is connected a check mark is shown in front of the item. Pressing the Curemo Button (black button in the center of the panel) has the same effect.

Show Panel

Toggles the Curemo Panel. Left clicking the Curemo Client icon in the notification area has the same effect.

Show Client Log

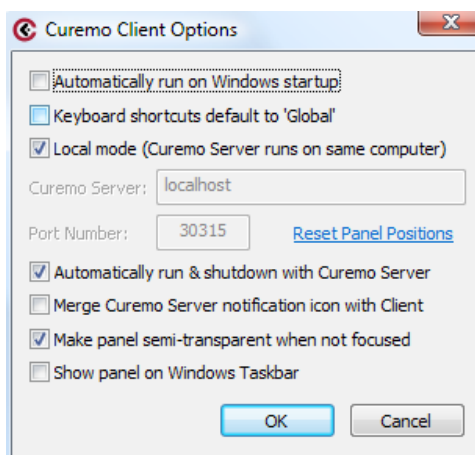
Toggles the Curemo Client log window. This window is useful for tracing client-server connection issues.

About...

Shows the About dialog with version and copyright information.

Options...

Shows the Curemo Client Options dialog.



Automatically run on Windows startup

If enabled Curemo Client will automatically start with Windows.

Keyboard shortcuts default to 'Global'

Keyboard shortcuts for commands can be defined as either local (only active when the Curemo Panel is active) or global (active regardless of the currently active window or application). This option defines what mode new shortcuts will use by default.

Local mode (Curemo Server runs on same computer)

Enable this option if you run the client on the same computer as Curemo Server for optimal performance and low overhead. For remote connections you must disable the option and instead specify the server location and port. Note that you can successfully enable this option even if the Server does not run in "local mode", though not the other way around. This option must be enabled in order to use the ***Automatically run & shutdown with Curemo Server*** option.

Curemo Server / Port Number

Specify the computer name or IP address and TCP/IP port number for the Curemo Server here. The information must match that of the Curemo Server you want to control and the specified port must be accessible through a firewall. This information does not need to be specified if Curemo runs in "local mode".

Reset Panel Positions

Click on this item to reset the Curemo Panel and Log window to their default positions. This is useful if they somehow got "lost" due to a changed display configuration.

Automatically run & shutdown with Curemo Server

Enable this option to automatically start and shutdown Curemo Client with Curemo Server on the same machine (effectively this will start/shutdown Curemo Client with Cubase). This option is only available when local mode is enabled.

Merge Curemo Server notification icon with Client

Enable this option to merge the local notification icon of Curemo Server with that of Curemo Client. When enabled the Curemo Server menu is available under the **Server** sub menu of the Curemo Client menu.

Make panel semi-transparent when not focused

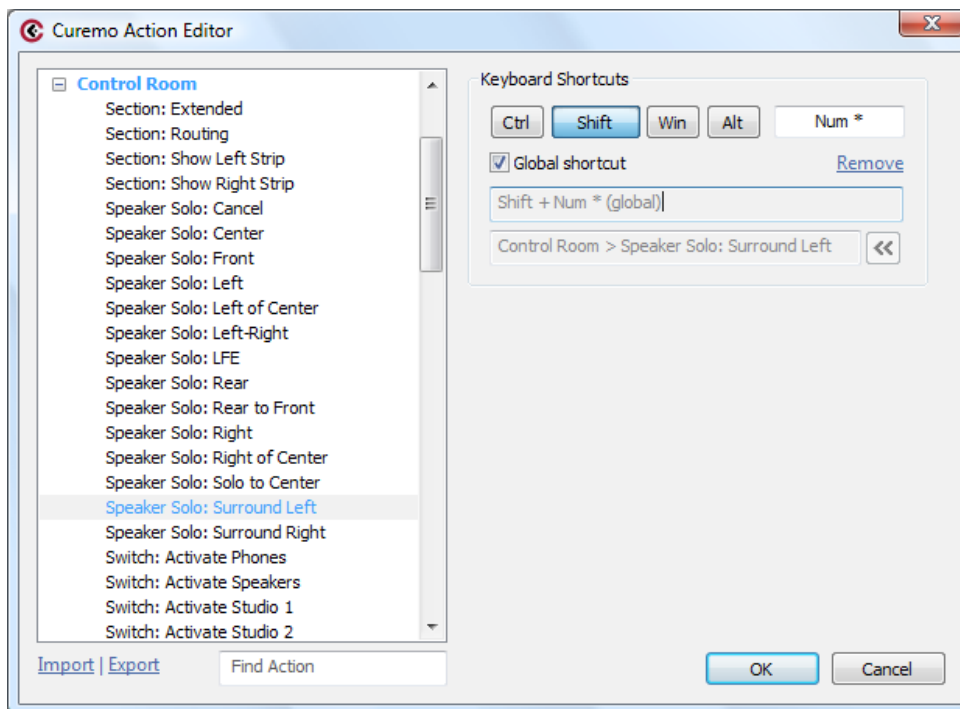
Enable this option to make the panel window appear semi-transparent when it does not have the current focus. Disable the option for regular window appearance regardless of the focus.

Show panel on Windows Taskbar

Enable this option to show a Taskbar button for the panel window. If you want to be able to minimize the panel window to the Windows Taskbar then you must enable this option first. Disable the option to not show a Taskbar button (the panel window can always be accessed via the Windows notification area).

Edit Actions...

Shows the Action Editor dialog. The Action Editor allows you to define keyboard shortcuts for Cubase commands that are controllable through Curemo. All keyboard shortcuts and the **Enable Actions** command will temporarily be disabled while the Action Editor is shown.



The list on the left side of the window shows all available commands. Click on a command to view, edit or assign a shortcut to it. Commands which have a keyboard shortcut assigned to it are shown in a different color. Below the list is the **Find Action** box. Click on this box and start to type (part of) the name of the command you want to assign a shortcut to. To find the next match use the F3 key while the edit box still has the focus. Next to the Find box are commands for Importing and Exporting the current configuration from/to a file.

On the right side of the window you can view, edit or assign a shortcut to the selected command. Toggle any of the modifier keys, press the key while the edit box has the focus and define whether the shortcut should be Global (active regardless of the current foreground window or application). The full shortcut is shown in the box below and the command to which it is assigned below that. If the specified shortcut is already in use by another command, then that command will be shown in red. Use the little chevron button to reassign the shortcut to the current command instead. The “Remove” command will remove the shortcut from the current command.

Edit Panel...

Shows the Panel Editor which allows you to completely customize the Curemo Panel for both Curemo Client and Curemo Mobile. Panel customization and the Panel Editor are explained in full in chapter 7.

Exit

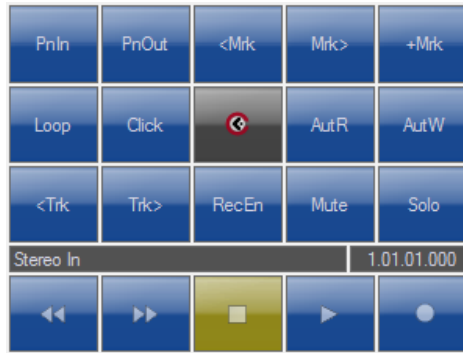
Exits Curemo Client.

Show Buttons (Curemo Panel only; Second button)

Toggles the expanded transport “buttons” view of the Curemo Panel. The Curemo Panel in expanded mode shows buttons that allow quick control over Cubase using your mouse, stylus or fingers (on touch sensitive displays). If the Panel is shown in compact mode (or hidden altogether) then only control by keyboard is possible.

7 - Curemo Panel

For GUI control and state feedback of (remote) Cubase commands Curemo uses the concept of a Panel. The panel consists of: Buttons which map to Cubase commands with a short name, icon and state indication; An information line that shows the number and name of the active track; And a special Curemo button. The default Panel is the same in Curemo Client and Curemo Mobile and looks like this:

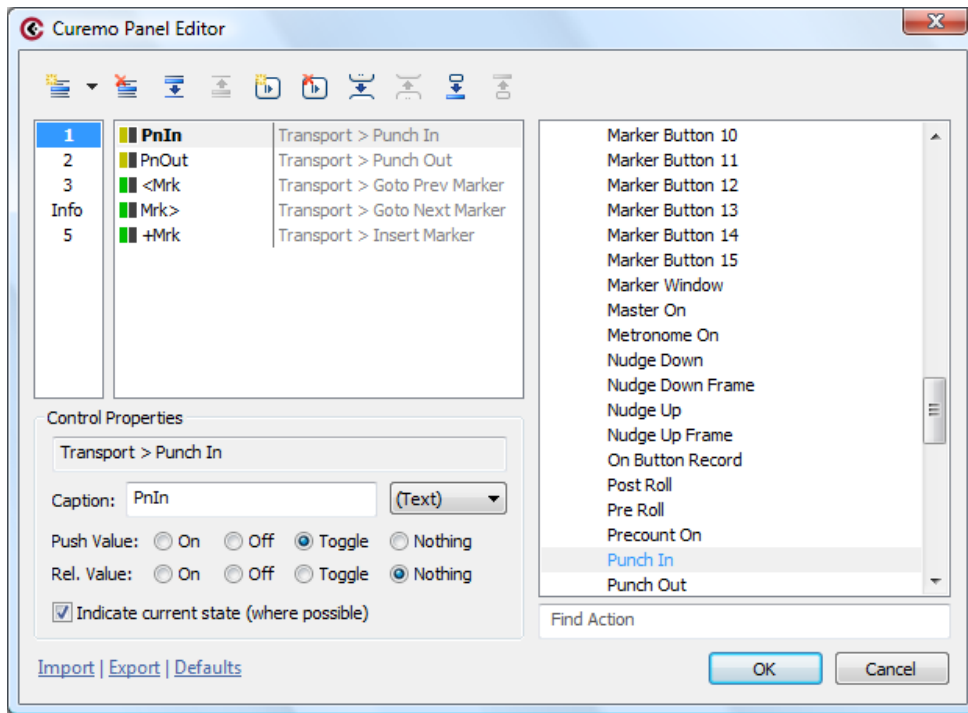


The buttons execute the following commands:

Punch In	Punch Out	Previous Marker	Next Marker	Insert Marker
Loop	Click (Metronome)	Curemo Button	<u>Write Automation</u>	<u>Read Automation</u>
Previous Track	Next Track	<u>Record Enable</u>	<u>Mute</u>	<u>Solo</u>
Current Track (Number and) Name			Current Cursor Position	
Rewind	Fast Forward	Stop	Start	Record

Items with a yellow background indicate their current state (if command feedback is enabled in Curemo Server). Underlined items act on the current track, other buttons act globally. The Curemo Button (black button in the center) is a special button that does not execute a command on the Server but rather is a button you can push when something is up. If not connected, pushing the button will try to connect to the server. If connected, pushing the button will refresh the current state of all commands (if command feedback is enabled). On an error the button turns red, if pushed in that state then the Client log will be shown which contains more information about the error. Right clicking the button (or push & hold on Curemo Mobile) will always show the log (and also the Options dialog in Curemo Mobile only). The icon on the button matches that of the Curemo Client notification icon. See chapter 6 for information about the meaning of the various icon states.

Shown above is the *default* panel. The panel can however be completely customized using the **Panel Editor** which can be accessed using the **Edit Panel** command in Curemo Client. Customized panels can be exported to file and can be imported in Curemo Client and Curemo Mobile instances.



This rather complex looking dialog makes much more sense if you understand that a Panel is built up of Rows and Buttons, of which Buttons are mapped to a command. Additionally there can be one special row: The **Info** row; And there can be a special Button: The Curemo Button (to which no command can be mapped). Buttons have a short caption name or special icon (e.g. for transport controls), a Push value, a Release value and a toggle for showing the current state.

The toolbar at the top of the dialog allows you to create new rows and buttons and allows rows and buttons to be moved up and down. Below the toolbar are two lists. The leftmost list shows the rows. The list next to that shows the buttons on the selected row. The small icon in front of the button name indicates the Push/Release value: Green for "On", Red for "Off", Yellow for "Toggle" and Black for "Nothing". Left side is "Push", right side is "Release".

The rightmost list shows the command for the selected button. Select a command to assign it to the button. Type (part of) the command name in the "Find Action" edit box to find it. Use F3 while the focus is still on the edit box to find the next match.

Below the Rows and Buttons list are the Control Properties. The first item shows the full name of the assigned Command. The Caption edit box allows you to specify a short textual caption for a button if the drop-down list is set to "(Text)". Alternatively you can select an icon or special command from the list.

The Push/Release Value radio buttons allow you to specify what happens when you push and release the button. "On" means that Curemo will always tell Cubase to enable/activate a certain command or control, regardless of its current state. "Off" will always disable/deactivate a certain command or control. "Toggle" will toggle the current state of the command/control in Cubase. Note that this is only possible for commands that provide state-feedback (e.g. this makes little sense on the "File > Open" command, but does very much so on the "Transport > Cycle" command). The option "Nothing" will send nothing at all to Cubase, and is a typical setting for the "Release Value" in most cases.

The "Indicate current state" check box specifies whether or not the current state of a command in Cubase is indicated. This only has effect on commands that provide such feedback.

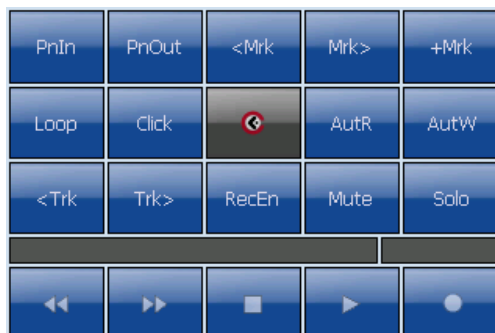
Using the Import & Export commands you can save/load the current panel to/from file. Panel files can then be imported by other Curemo Client and Curemo Mobile instances. Use the "Defaults" command to revert back to the default panel layout (as shown in the beginning of this chapter).

Please note that *any* action in this dialog (including Import, Export and Defaults) will not be applied to the currently active panel in Curemo Client until the OK button is pressed.

8 - Curemo Mobile

Curemo Mobile is a client application that runs on Windows Mobile PocketPC devices with WiFi (or other) LAN connection and a touch sensitive display. Curemo Mobile can be installed on your mobile device by copying the **CuremoMobile.cab** file to it and executing it on the device itself. The CAB installer can be found in the **Mobile** sub folder of the main Curemo installation folder (typically: C:\Program Files\Protonfx\Curemo\Mobile). The Mobile folder also contains a text file with more detailed step-by-step installation instructions.

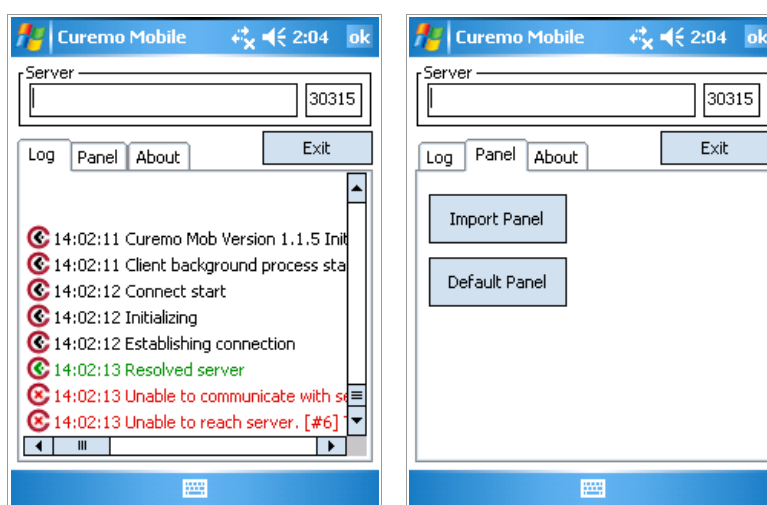
The interface of Curemo Mobile is exactly the same as the Curemo Panel of Curemo Client. Tap on any button using the stylus or you fingers to execute the command. The dimensions of the buttons depends on the screen resolution of the mobile device.



The Curemo Button in the center of the screen has a dual action:

- ◆ Click or tap it quickly to (re)connect and to update the current state of buttons.
- ◆ Push and hold the button to show the Options dialog.

From the Options dialog you can change the server connection settings, see the log file and program information and exit the application. Make sure that the correct server name or address and port is specified here. Press the OK button to apply the settings and to (re)connect to the server.



The **Import Panel** button allows you to import a customized Panel from file. Panels can be created using Curemo Client (see chapter 7). Simply copy the panel file to the device and select it in the dialog that is shown when the Import Panel button is pressed. The **Default Panel** will revert the panel of Curemo Mobile to its default layout.

9 - Copyright & Licensing

Curemo is a software product created by and copyright © Protonfx 2008-2009. All rights to the software are reserved. In order to use the software beyond a 30-day grace period a license for usage of the software must be obtained from Protonfx or the software must be deleted from your system(s).

In no circumstance can Protonfx be held liable for damages to health, good or property nor for loss of income due to the usage of Curemo. It is prohibited to sell, modify, extend, reverse-engineer, make available for download or copy the software without the express prior permission from Protonfx. Copies of the software may be made solely for

personal use or archival reasons if a license has been obtained.

Licenses for Curemo are valid for a single Curemo Server instance. This means that a single license allows you to use any number of Clients with a single Curemo Server owned by a single person or company. The number of actual client users is unlimited. After obtaining a license you can register the software using the **Register** command in Curemo Server. *See chapter 5 for more information.*

More information, contact details and licenses can be found at <http://www.protonfx.com/curemo>